

Zildjian®  
Rhythm Cards  
LEVEL 2



↓  
1



↓  
2



↓  
3



↓  
4



*Zildjian*<sup>®</sup> Rhythm Cards

LEVEL **2**



↓  
1



↓  
2



↓  
3



↓  
4



*Zildjian*<sup>®</sup> Rhythm Cards

LEVEL **2**



*Zildjian*<sup>®</sup> Rhythm Cards

LEVEL **2**



*Zildjian*<sup>®</sup> Rhythm Cards

LEVEL **2**



↓  
1



↓  
2



↓  
3



↓  
4



*Zildjian*® Rhythm Cards

LEVEL **2**



↓  
1



↓  
2



↓  
3



↓  
4



*Zildjian*® Rhythm Cards

LEVEL **2**



1



2



3



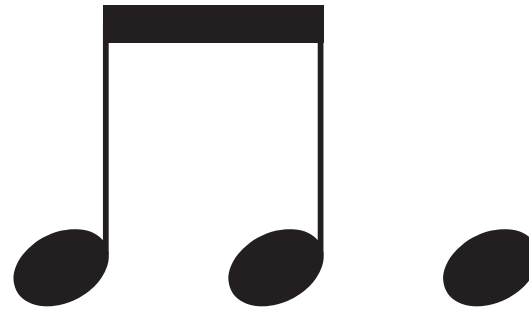
4



*Zildjian*<sup>®</sup> Rhythm Cards

LEVEL **2**





↓  
1



↓  
2



↓  
3



↓  
4



*Zildjian*® Rhythm Cards

LEVEL **2**



↓  
1



↓  
2



↓  
3

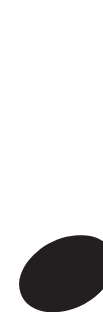


↓  
4



*Zildjian*<sup>®</sup> Rhythm Cards

LEVEL **2**



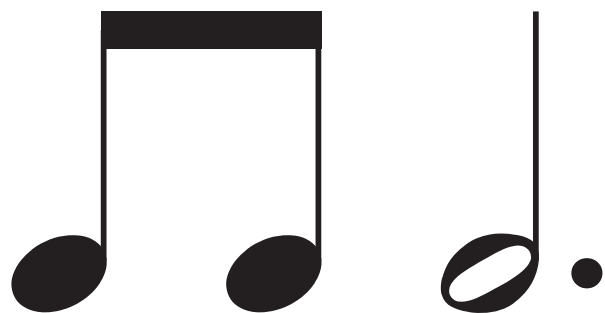
*Zildjian*<sup>®</sup> Rhythm Cards

LEVEL **2**



Zildjian® Rhythm Cards

LEVEL 2



↓  
1



↓  
2



↓  
3



↓  
4



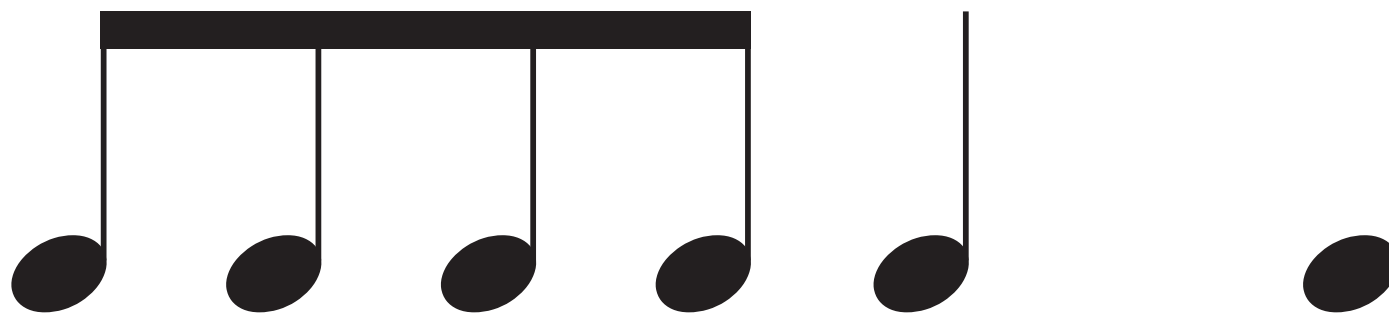
*Zildjian*® Rhythm Cards

LEVEL **2**



Zildjian® Rhythm Cards

LEVEL 2



↓  
1



↓  
2



↓  
3

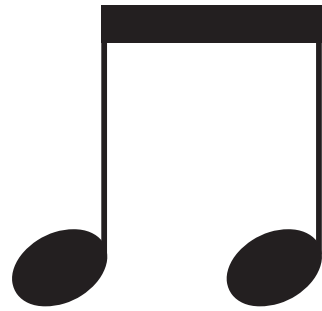


↓  
4



*Zildjian*® Rhythm Cards

LEVEL **2**



*Zildjian*<sup>®</sup> Rhythm Cards

LEVEL **2**





1



2



3



4



*Zildjian*<sup>®</sup> Rhythm Cards

LEVEL **2**



↓  
1



↓  
2



↓  
3



↓  
4



Zildjian® Rhythm Cards

LEVEL 2



↓  
1



↓  
2



↓  
3



↓  
4



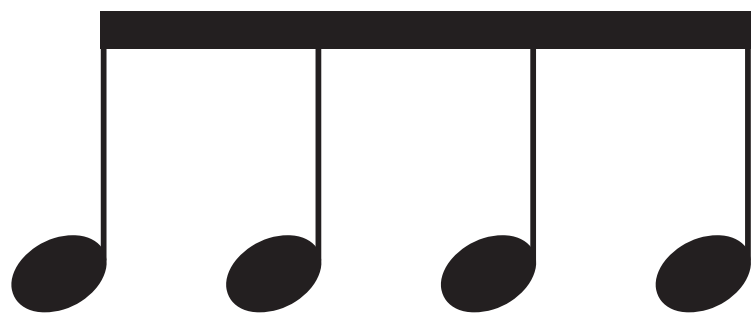
*Zildjian*® Rhythm Cards

LEVEL **2**



*Zildjian*<sup>®</sup> Rhythm Cards

LEVEL **2**



↓  
1



↓  
2



↓  
3

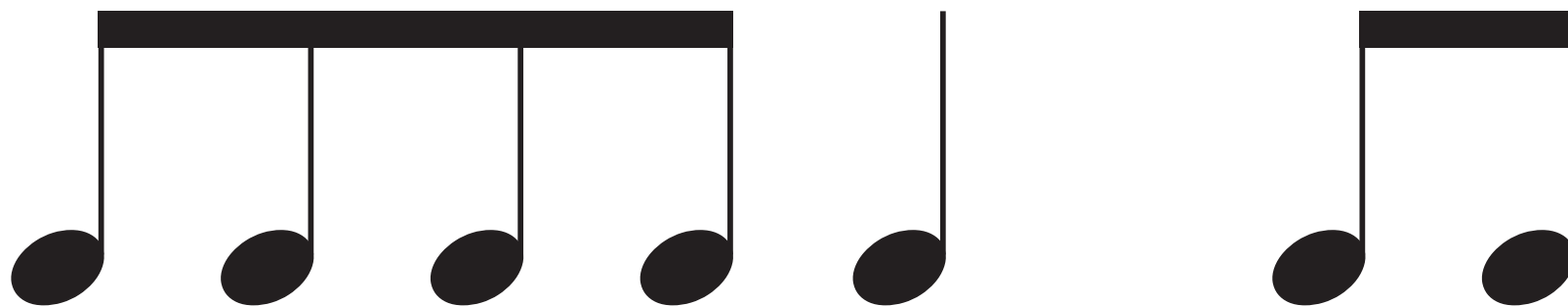


↓  
4



*Zildjian*<sup>®</sup> Rhythm Cards

LEVEL **2**



↓  
1



↓  
2



↓  
3

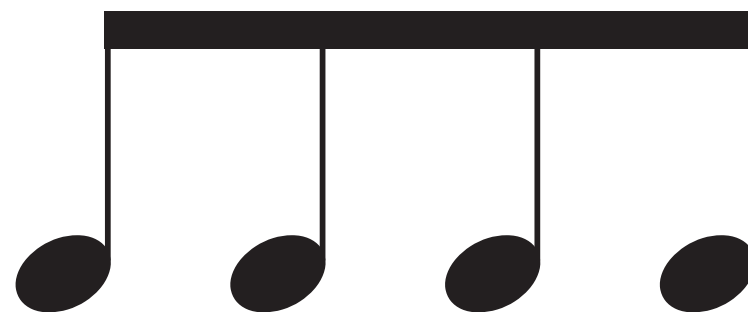


↓  
4



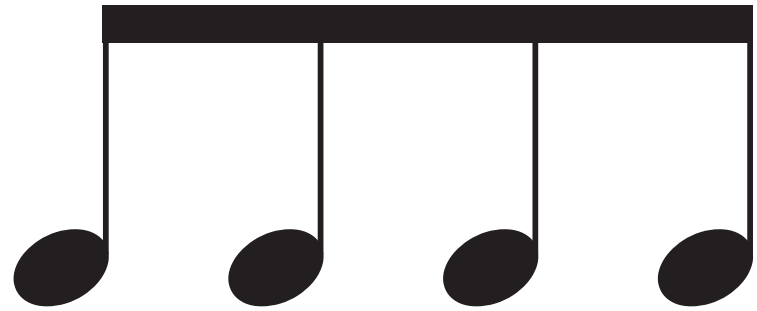
*Zildjian*<sup>®</sup> Rhythm Cards

LEVEL **2**



Zildjian® Rhythm Cards

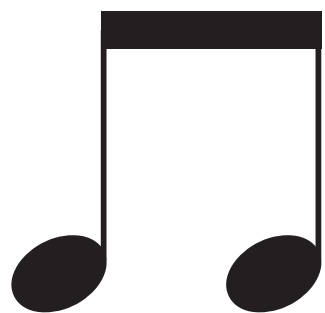
LEVEL 2



*Zildjian*<sup>®</sup> Rhythm Cards

LEVEL **2**





↓  
1



↓  
2



↓  
3



↓  
4



*Zildjian*® Rhythm Cards

LEVEL **2**



↓  
1



↓  
2



↓  
3



↓  
4



Zildjian® Rhythm Cards

LEVEL 2



↓  
1



↓  
2



↓  
3



↓  
4



*Zildjian*® Rhythm Cards

LEVEL **2**



↓  
1



↓  
2



↓  
3

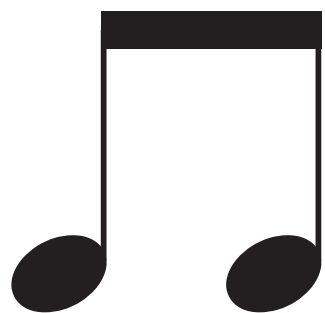


↓  
4



*Zildjian*<sup>®</sup> Rhythm Cards

LEVEL **2**



↓  
1



↓  
2



↓  
3



↓  
4



Zildjian® Rhythm Cards

LEVEL 2



↓  
1



↓  
2



↓  
3



↓  
4



*Zildjian*<sup>®</sup> Rhythm Cards

LEVEL **2**



↓  
1



↓  
2



↓  
3



↓  
4



*Zildjian*® Rhythm Cards

LEVEL **2**



↓  
1



↓  
2



↓  
3



↓  
4



*Zildjian*® Rhythm Cards

LEVEL **2**



1      2      3      4

Zildjian® Rhythm Cards

LEVEL 2



↓  
1



↓  
2



↓  
3



↓  
4



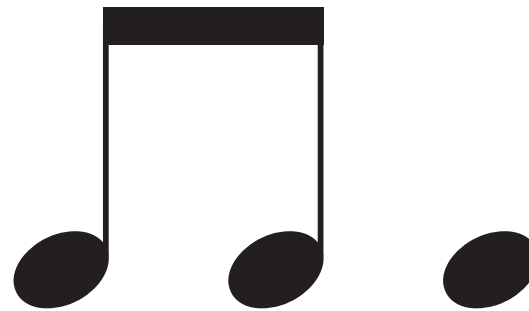
Zildjian® Rhythm Cards

LEVEL 2



*Zildjian*<sup>®</sup> Rhythm Cards

LEVEL **2**



↓  
1



↓  
2



↓  
3

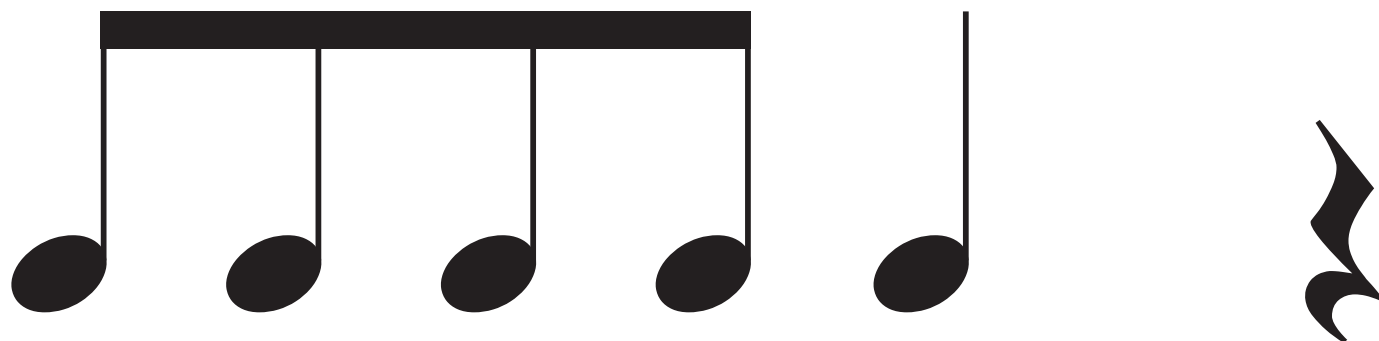


↓  
4



*Zildjian*<sup>®</sup> Rhythm Cards

LEVEL **2**



↓  
1



↓  
2



↓  
3



↓  
4



*Zildjian*® Rhythm Cards

LEVEL **2**



↓  
1



↓  
2



↓  
3

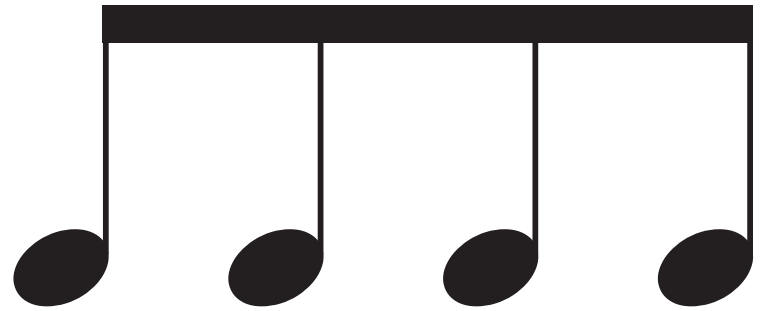


↓  
4



Zildjian® Rhythm Cards

LEVEL 2



*Zildjian*® Rhythm Cards

LEVEL **2**



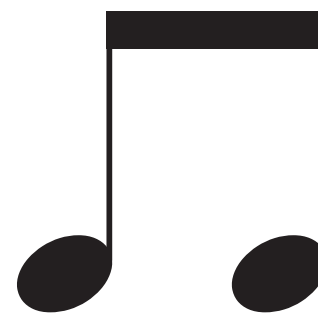
↓  
1



↓  
2



↓  
3



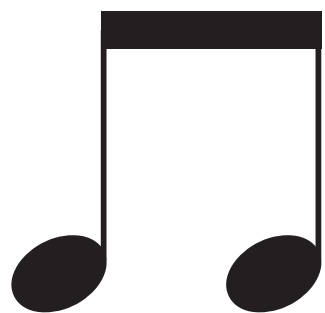
↓  
4



*Zildjian*<sup>®</sup> Rhythm Cards

LEVEL **2**





↓  
1



↓  
2



↓  
3



↓  
4



*Zildjian*® Rhythm Cards

LEVEL **2**



↓  
1



↓  
2



↓  
3



↓  
4



*Zildjian*<sup>®</sup> Rhythm Cards

LEVEL **2**



↓  
1



↓  
2



↓  
3



↓  
4



*Zildjian*® Rhythm Cards

LEVEL **2**



↓  
1



↓  
2



↓  
3

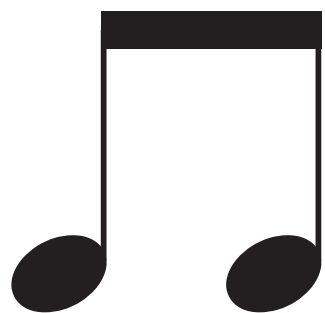


↓  
4



*Zildjian*® Rhythm Cards

LEVEL **2**



↓  
1



↓  
2



↓  
3



↓  
4

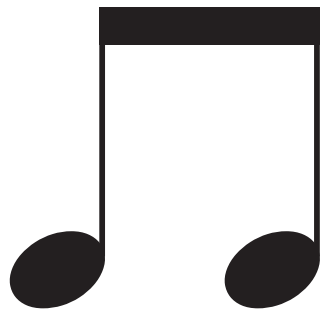


*Zildjian*® Rhythm Cards

LEVEL **2**



↓  
1



↓  
2



↓  
3



↓  
4



Zildjian® Rhythm Cards

LEVEL 2



↓  
1



↓  
2



↓  
3



↓  
4



*Zildjian*® Rhythm Cards

LEVEL **2**



↓  
1



↓  
2



↓  
3



↓  
4



Zildjian® Rhythm Cards

LEVEL 2



A musical exercise on a 4-beat staff. The notation consists of: a quarter rest (beat 1), a quarter note (beat 2), a pair of beamed eighth notes (beats 3 and 4), and a quarter rest (beat 5). Below the staff, a sequence of arrows indicates the rhythm: a downward arrow labeled '1' (beat 1), an upward arrow (beat 2), a downward arrow labeled '2' (beat 3), an upward arrow (beat 4), a downward arrow labeled '3' (beat 5), an upward arrow (beat 6), a downward arrow labeled '4' (beat 7), and an upward arrow (beat 8).

*Zildjian*<sup>®</sup> Rhythm Cards

LEVEL **2**

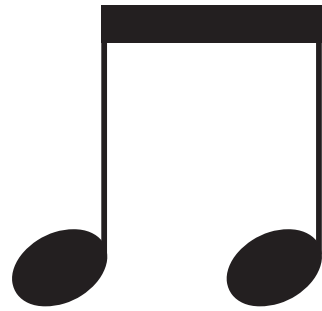


Zildjian® Rhythm Cards

LEVEL 2



↓  
1



↓  
2



↓  
3



↓  
4



*Zildjian*<sup>®</sup> Rhythm Cards

LEVEL **2**



↓  
1



↓  
2



↓  
3



↓  
4



*Zildjian*® Rhythm Cards

LEVEL **2**



↓  
1



↓  
2



↓  
3



↓  
4



*Zildjian*<sup>®</sup> Rhythm Cards

LEVEL **2**



↓  
1



↓  
2



↓  
3



↓  
4



Zildjian® Rhythm Cards

LEVEL 2



↓  
1



↓  
2



↓  
3



↓  
4



Zildjian® Rhythm Cards

LEVEL 2



↓  
1



↓  
2



↓  
3



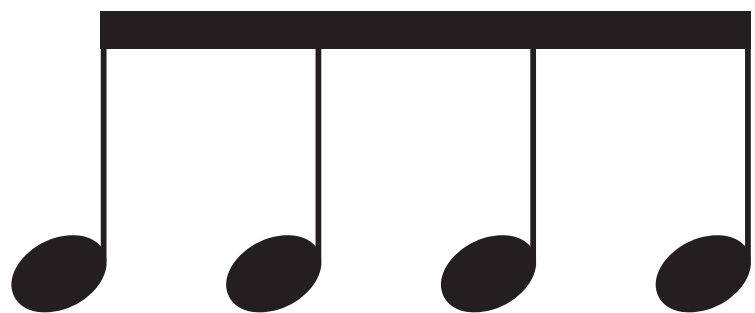
↓  
4



*Zildjian*<sup>®</sup> Rhythm Cards

LEVEL **2**





↓  
1



↓  
2



↓  
3



↓  
4



*Zildjian*<sup>®</sup> Rhythm Cards

LEVEL **2**



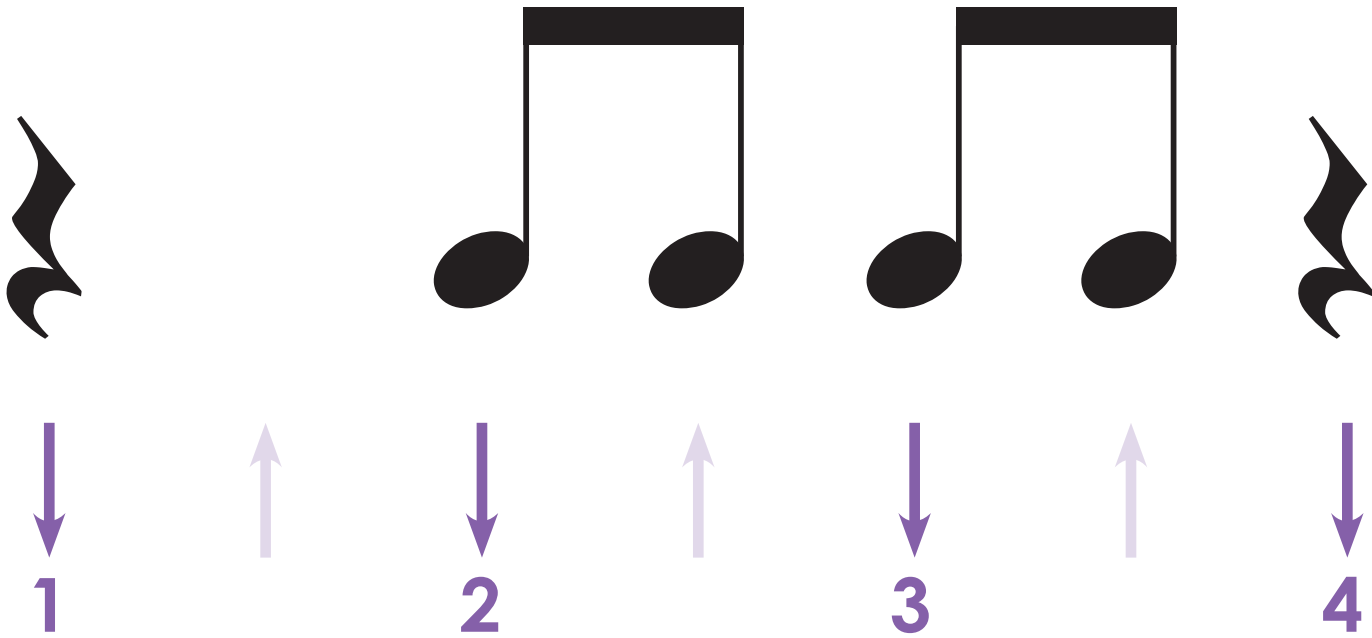
Zildjian® Rhythm Cards

LEVEL 2



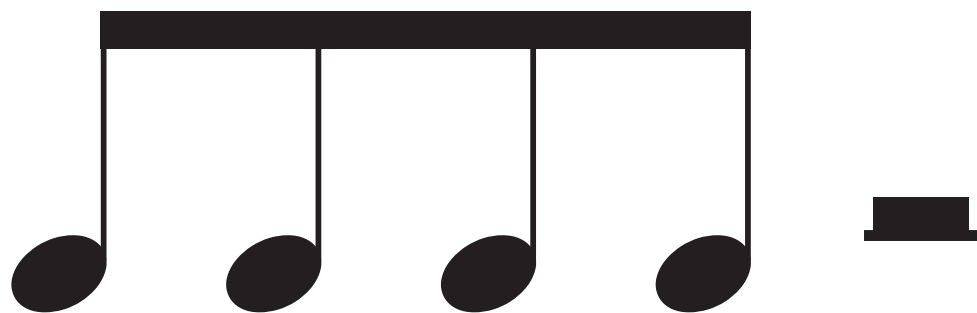
*Zildjian*® Rhythm Cards

LEVEL **2**



Zildjian® Rhythm Cards

LEVEL 2



↓  
1



↓  
2



↓  
3



↓  
4



*Zildjian*<sup>®</sup> Rhythm Cards

LEVEL **2**



↓  
1



↓  
2



↓  
3

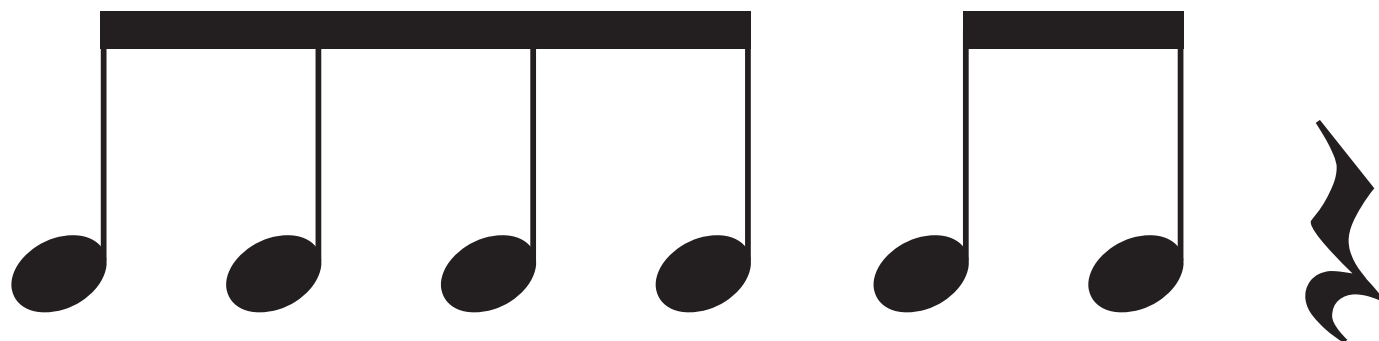


↓  
4



*Zildjian*® Rhythm Cards

LEVEL **2**



↓  
1



↓  
2



↓  
3

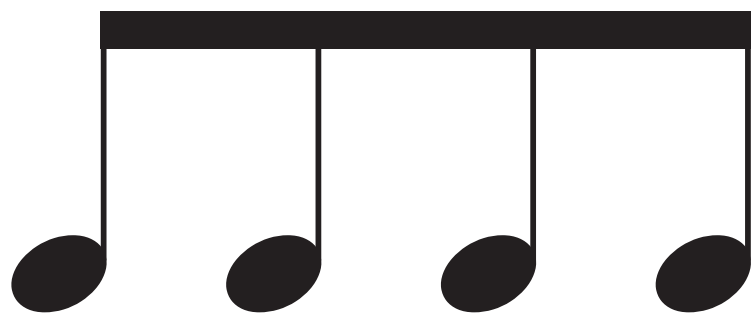


↓  
4



Zildjian® Rhythm Cards

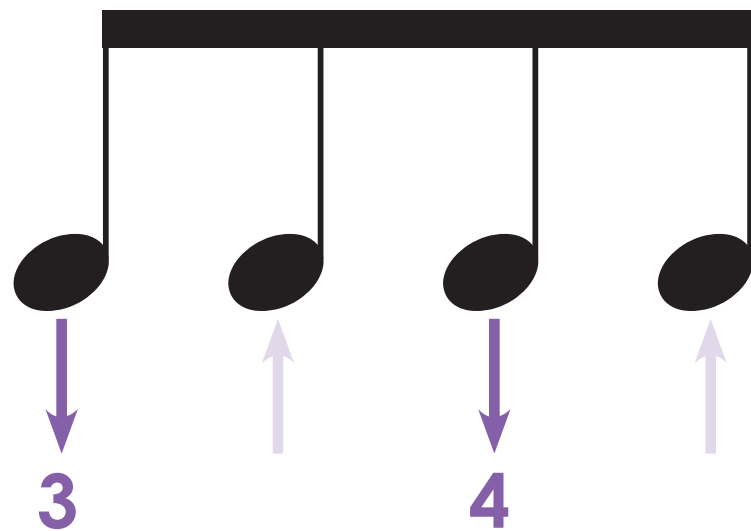
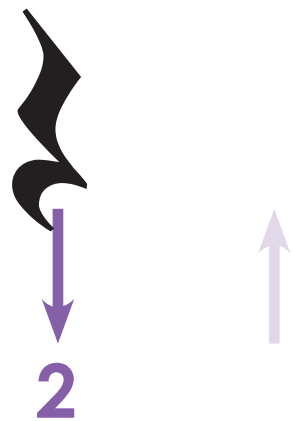
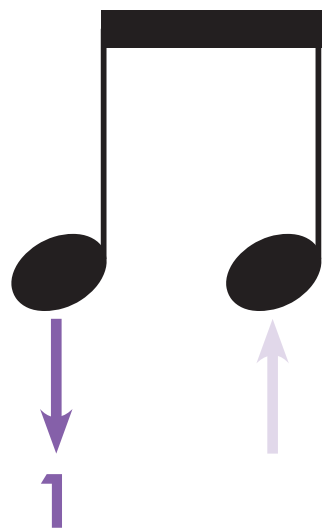
LEVEL 2



Zildjian® Rhythm Cards

LEVEL 2





Zildjian® Rhythm Cards

LEVEL 2