

#1: "Unison Single Beats"

Musical notation for #1: "Unison Single Beats". It consists of two staves in 4/4 time. The first staff contains two measures of eighth notes, each followed by a repeat sign. The notes are labeled with 'R' (right) and 'L' (left) underneath. The second staff contains four measures of eighth notes, with notes labeled 'R', 'R B', 'B L', and 'B' underneath.

#2: "Split Single Beats"

Musical notation for #2: "Split Single Beats". It consists of five staves in 4/4 time. The first staff has notes with accents (>) and dynamic markings *fff* and *mp*. The second staff has notes with accents and dynamic markings *mp* and *ff*. The third staff has notes with accents, dynamic markings *mp* and *mf*, and triplets (3). The fourth staff has notes with accents, dynamic markings *f* and *mf*, and triplets (3). The fifth staff has notes with accents, dynamic markings *fff* and *mf*, and triplets (3). The notation includes various dynamic markings, accents, and triplet markings throughout.

#3: "Accent Tap"

Musical notation for #3: "Accent Tap". It consists of three staves in 4/4 time. The first staff has notes with accents and dynamic markings *mp* and *ff*. The second staff has notes with accents and dynamic markings *ff*, *mf*, *f*, *ff*, *ff*, *mf*, *f*, and *ff*. The third staff has notes with accents and dynamic markings *fff*, *f*, *fff*, *f*, and *fff*. The notation includes various dynamic markings and accents throughout.

#5: "Triple Beats"

Musical score for "Triple Beats" exercise. The score consists of five systems of music. The first system is in 12/8 time and includes dynamics *ff* and accents. The second system continues the patterns. The third system includes changes to 6/8 and 12/8 time signatures and features *ff* dynamics. The fourth system includes 5/8 and 9/8 time signatures and features *ff* dynamics. The fifth system continues the patterns. Rhythmic patterns are indicated by letters R (right) and L (left) below the notes.

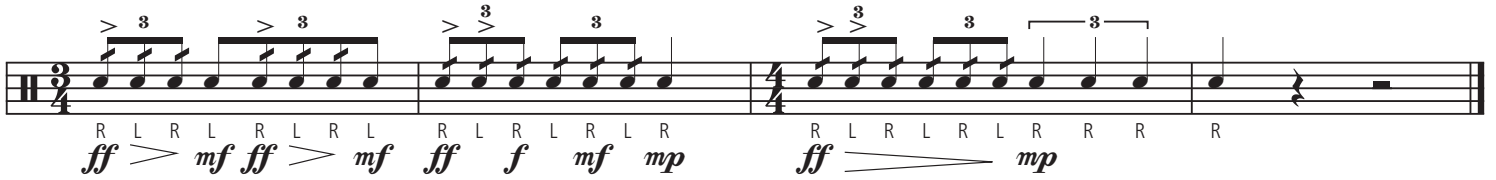
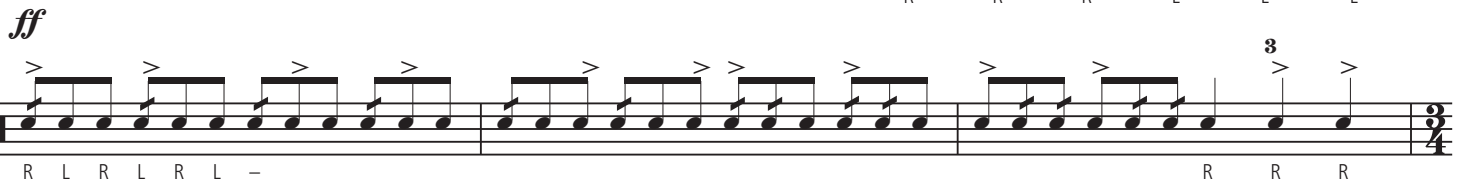
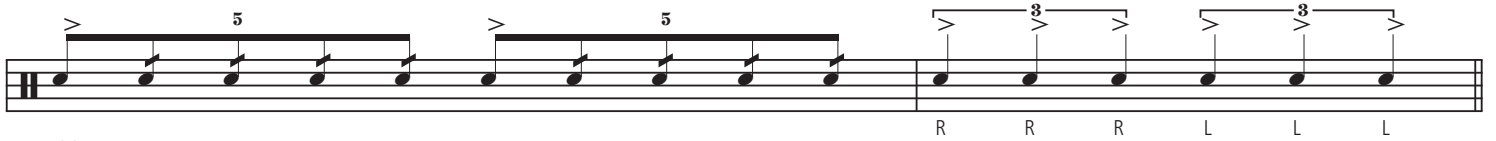
#6: "Roll Exercise"

Musical score for "Roll Exercise" in 4/4 time. The first system features triplet patterns and a dynamic marking of *f*. The second system continues the patterns. The third system features a continuous roll pattern.

----- OPTIONAL: EXTENDED ROLL / CHOP OUT (leave out for full exercise) -----

A musical staff containing six measures, each marked with a double slash (/) to indicate a rest or chop out.

Musical score for section "A". The first system includes a dynamic marking of *mf* and a wedge-shaped hairpin. The second system continues the roll pattern.



PRACTICE ALONG WITH TOM!
zildjian.com/education/zildjian-workout.html